

# Horizon scanning

## ACCESS assembly 2022

Birgitta Gatersleben (Surrey), Clive Mitchell (Nature Scott), Holly Butterworth (Natural resources Wales) Susan Williams (Natural resources Wales), Gary Kass (Natural England), Luke Maggs (Natural resources Wales), Marcela Capaja (Natural England), Sarah Golding (Surrey), Steve Guilbert (Exeter), Michelle Spruce (Exeter)



# Overview



- 2.00-2.15: Introduction: Birgitta Gatersleben and Clive Mitchell
- 2.15-.300: Break out groups
- 3.00-3.15: Break and move back to main room
- 3.15-3.50: Group feedback
- 3.50-4.00: Wrap up



# Introduction

- Aim of the session
- Introduce principles, goals and context of horizon scanning for ACCESS
- Workshop – taster session
  - Build future “what if” scenario vignettes
  - Identify questions for future environmental social science research
- Build an enthusiastic network willing to participate in future sessions



# Horizon scanning in ACCESS

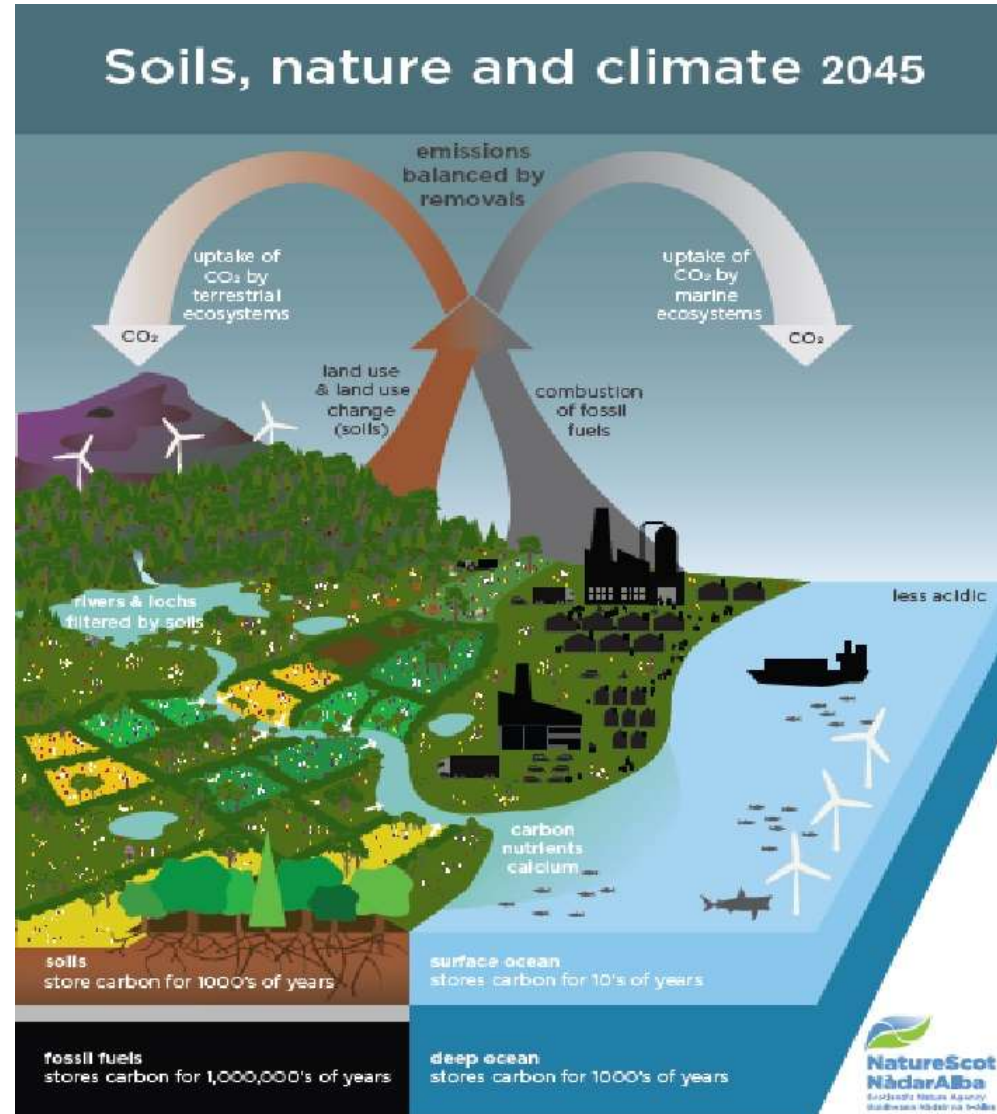
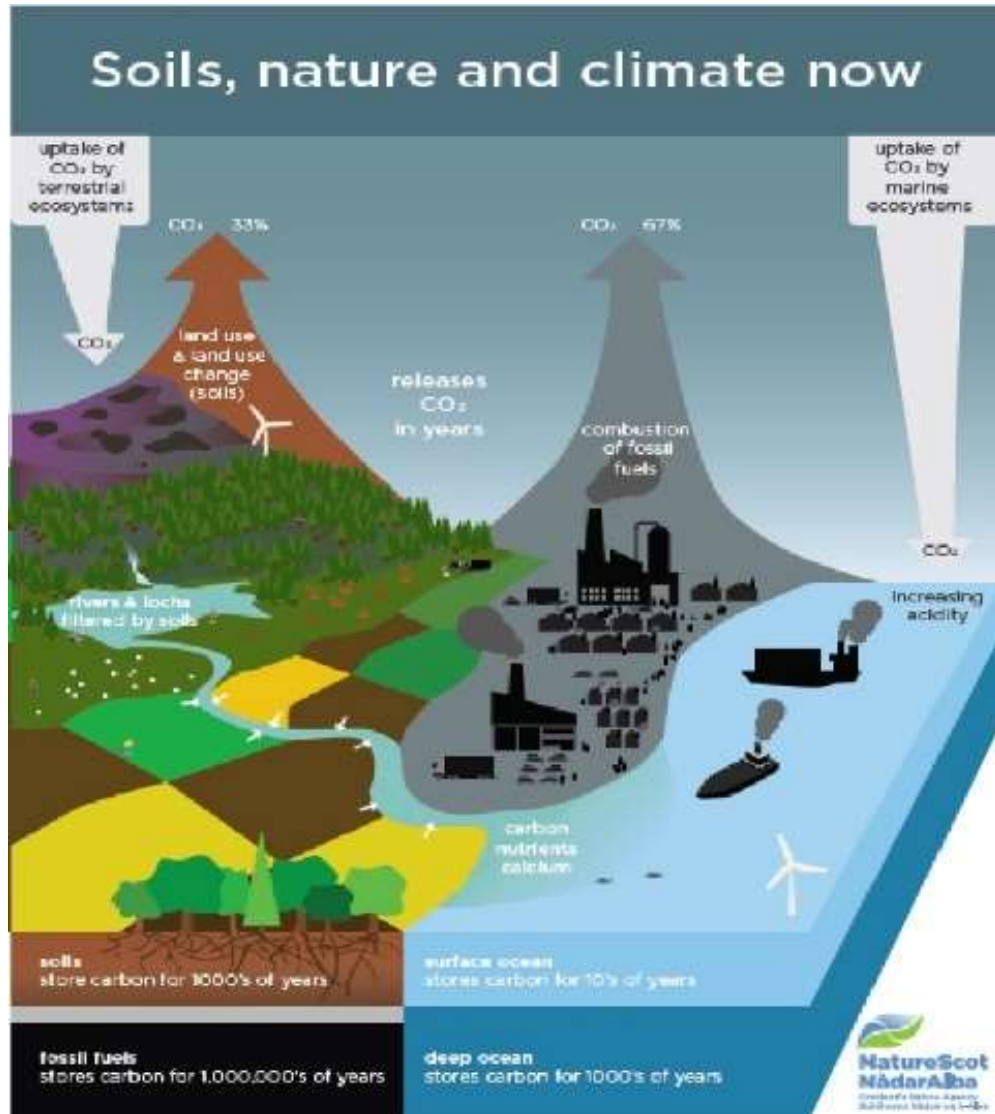
- What is horizon scanning?
  - Lots of different perspectives
  - A systematic process used to change mind-sets, challenge assumptions and provide more options
  - Ask unasked questions, identify the unknown unknowns
- What it is not
  - A one size fits all approach
  - Predicting the future
- Aim of horizon scanning in ACCESS
  - To scope future environmental social science research questions using inclusive methods with participants across sectors and scales



# Horizon scanning in ACCESS

- Assembly workshops in person
- On-line workshops – specific topics
- Strong links with other WP's and tasks
- Feed into future calls ESRC, Flex fund

# The context – Clive Mitchell





# The workshop

Horizon scanning taster session

Generate research questions based on a “what if...” task

1. A series of initial possible future scenario vignettes
2. A series of research questions focusing on the role of environmental social science in addressing the challenges and risks arising from these scenarios

# Workshop



- Ten groups (3 on-line and 7 in the room) – see list
- Move to break out room
- 2.15-2.25: Discuss GO trend grid and selected **3 challenges/1 topic**
- 2.25-2.45: Use this to create a future scenario vignettes (what, who, how..)
- 2.45-3.00: Identify 1-3 key research questions for environmental social science
- 3.00-3.15: (comfort break and move back to main room)
- 3.15 -3.50: Group feed back (5 mins each – describe the scenario and 3 research questions)
- 3.50-4.00: Closing remarks and next steps



# GO trend grid



## The Trend Deck is...

- ❖ an introductory guide to trends;
- ❖ designed to start conversations;
- ❖ ideal as workshop material;
- ❖ useful for signposting to evidence sources;
- ❖ a 'snapshot' of policy-relevant trends.

<https://www.gov.uk/government/publications/trend-deck-spring-2021>



Climate Change	Demographics	Natural resources	Governance	Economic
Global 2030 climate pledges are insufficient to limit warming to 2°C	Increase in over 65's to more than a quarter of the UK population by 2066	Projected decrease in UK total final energy demand	Perceptions of large gaps in social classes in the UK remain	Global investment in infrastructure is projected to fall short under current trends
Climate change is projected to impact on food security	Slowing global population growth rate	Huge regional variations in global water stress	More than half of the world's population live in a democracy	Increasing number of young people in low paid occupations and zero hours contracts
Increasing number of high impact climate and weather events affecting people	England and Wales are becoming more ethnically diverse	Long-term decline in UK pollinators	Cyber attacks have evolved and become more frequent	UK labour productivity has slowed since 2008 recession

# Workshop (back here at 3.15!)



1. Group 1: on-line (facilitator Like Maggs)
2. Group 2: on-line (facilitator Gary Kass)
3. Group 3: on-line (facilitator Liz O'Brien/Asher Minns)
4. Group 4: Conference room 1 (facilitator Holly Butterworth)
5. Group 5: Conference room 1 (facilitator Steve Guilbert)
6. Group 6: The Henderson Lecture Theatre (facilitator Clive Mitchell)
7. Group 7: Seminar Room A (facilitator Sarah Golding)
8. Group 8: Seminar Room B (facilitator Birgitta Gatersleben)
9. Group 9: Seminar Room C (facilitator Michelle Spruce)
10. Group 10: Conference Room 2 (facilitator Chris Jones)

**Use your grid**

**Create**

**Scenario vignettes**

**1-3 research questions**

# Feedback



- Each group
- 1-2 mins – max!
  
- Your research question(s)
  
- Were they influenced by the workshop and if so how?

Thank you!





# Next (and past steps)

- Collate research questions and feed into future activities
  - e.g., Flexfund
- ESRC calls
  - Done
    - Assembly analyses and survey with ACCESS to help shape
    - Report to ESRC – outcomes submitted to council in May
      - Themes: place-based, sustainable living, economic solutions, co-production
  - Planned: focused on-line workshop to help shape ESRC calls
    - Feed into call Autumn/Winter 2022?