

# ACCESS ASSEMBLY 2026

**Wednesday 17 - Thursday 18 June**

University of Exeter



# PROGRAMME

**12-12.50pm**

Atrium, Xfi

**Registration & Lunch**

Vegan/vegetarian buffet

**12.55-1.10pm**Henderson Lecture  
Theatre, Xfi/hybridPatrick Devine-  
WrightBirgitta  
Gatersleben**Welcome and Introduction**

ACCESS Directors Patrick & Birgitta will introduce this year's Assembly, share recent ACCESS highlights and preview what's to come in the final months of the project.

- **Patrick Devine-Wright** (ACCESS Director, University of Exeter)
- **Birgitta Gatersleben** (ACCESS Co-Director, University of Surrey)

**1.10-2.30pm**Henderson Lecture  
Theatre, Xfi/hybrid**Session 1 – Negotiating the boundary between research and policy: lessons from ACCESS**

Presentations from the three ACCESS Task Forces – on net zero, nature recovery, and adaptation and resilience – and the ACCESS Policy and Practice Working Group, followed by discussion and Q&A.

**Presentations**

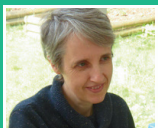
- **Karen Bickerstaff** (University of Exeter) – Net Zero Task Force Lead  
Making a Net Zero Society – Follow the social science
- **Michael Winter OBE** (University of Exeter) – Nature Recovery Task Force Lead  
Implementing Nature Recovery in the UK: What can Social Science offer?
- **Rory Walshe** (Government Office for Science) & **Irene Lorenzoni** (University of East Anglia) – Adaptation & Resilience Task Force Leads  
Climate change adaptation and resilience to natural hazards
- **Hazel Napier** (British Geological Survey), **Helen Roberts** (Met Office) & **Jo Hamilton** (University of Exeter & ACCESS Fellow)  
The ACCESS Policy and Practice Working Group

**Discussants**

- **Carrie Heitmeyer** (Government Office for Science)
- **Neil Adger** (University of Exeter)
- **Melissa Wang** (Greenpeace Research Laboratories, Bioscience, University of Exeter)

**Chair**

- **Susan Owens OBE** (University of Cambridge)

Karen  
Bickerstaff

Michael Winter



Rory Walshe



Irene Lorenzoni



Hazel Napier



Helen Roberts



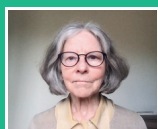
Jo Hamilton

Carrie  
Heitmeyer

Neil Adger



Melissa Wang



Susan Owens

2.35–2.45pm

Comfort Break

2.45–3.45pm

Henderson Lecture  
Theatre, Xfi**Session 2 – Negotiating disciplinary and sectoral boundaries:  
lessons from ACCESS**

Presentations on two ACCESS projects followed by discussion and Q&amp;A

**Presentations**

Ethny Childs



Anita Lateano

- **Ethny Childs** (Head of Communities & Partnerships, Institution of Environmental Sciences) & **Anita Lateano** (University of Westminster & ACCESS Fellow)  
Environmental Social Science in interdisciplinary working.



Beth Brockett

- **Beth Brockett** (Senior Social Scientist, Forest Research )  
Mainstreaming of Social Sciences in Environment Policy & Practice (MOSSEPP)

**Discussants**

Nicky Dean



Emily Cox

- **Nicky Dean** (Editorial Director - Earth, Environment, and Social Sciences Nature Journals, Nature Portfolio)
- **Emily Cox** (Head of Research & Evaluation, Centre for Sustainable Energy)
- **Karishma Jain** (Teaching Professor of Sustainability and Innovation, Dept of Physics, University of Cambridge)

**Chair**

- **Birgitta Gatersleben** (ACCESS Co-Director, University of Surrey)

3.45–4.15pm

Atrium, Xfi

Tea &amp; Coffee Break

4.15–4.45pm

Henderson Lecture  
Theatre, Xfi/hybrid  
(Livestream)**Keynote Session: Julian Agyeman (Tufts University)****Just Sustainabilities in Policy, Planning and Practice**

(Followed by Q&amp;A)

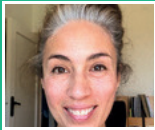
In his talk, Julian will outline the concept of just sustainabilities as a response to the 'equity deficit' of much sustainability thinking and practice. He will explore his contention that who can belong in our cities will ultimately determine what our cities can become. He will illustrate his ideas with examples from urban planning and design and the 'Minneapolis Paradox'.

**Chair**

- **Patrick Devine-Wright** (ACCESS Director, University of Exeter)



Julian Agyeman

**4.50–5.30pm**Henderson Lecture  
Theatre, Xfi/hybrid

Mandi Bissett



Pamela Buchan



Jaya Gajparia



Jennifer Rudd



Gurpreet Padda



Katrina Macneill



Rob Gross



Susie Stevenson

**Session 3: Dialogues on how we grow leadership capacity in Environmental Social Science**This session will be led by some of the [ACCESS Leadership College Fellows](#):

- **Mandi Bissett** (ACCESS Leadership College Fellow & Independent Scholar)
- **Pamela Buchan** (ACCESS Leadership College Fellow & University of Exeter)
- **Jaya Gajparia** (ACCESS Leadership College Fellow, ACCESS Senior Research Fellow, University of Exeter & Independent Scholar)
- **Jennifer Rudd** (ACCESS Leadership College Fellow & Swansea University)

In conversation with:

- **Gurpreet Padda** (Black Ocean Citizens and Marine Management Organisation)
- **Katrina Macneill** (Met Office)
- **Rob Gross** (UK Energy Research Centre)
- **Susie Stevenson** (Economic & Social Research Council)

**5.30–5.35pm**Henderson Lecture  
Theatre, Xfi**Wrap Up**

- **Birgitta Gatersleben** (ACCESS Co-Director, University of Surrey)

**6.45–11pm****6.45–7.30pm****7.30–9pm****9.15–10.30pm**Woodbridge Room,  
Reed Hall**Conference Evening****Pre-dinner Drinks on the lawn** (weather permitting)**Conference Dinner** – Hot vegan/vegetarian buffet**Ceilidh** (optional) – With music & calling from [The Dartmoor Pixie Band](#)

– Bring your dancing shoes!

or **Drinks in the Garden** – Bar open until 11pm

**9-9.15am**Henderson Lecture  
Theatre, Xfi**Welcome back**

- **Birgitta Gatersleben** (ACCESS Co-Director, University of Surrey)

**9.15-10.15am**Henderson Lecture  
Theatre, Xfi**ACCESS Flex Fund Project Update 1**

Presentations from two ACCESS Flex Fund projects followed by Q&amp;A

**Presentations**

- **Sarah Parry** (University of Edinburgh) & **Lynn Cassells** (Co-owner Lynbreck Croft)  
Building sustainability on a Foundation of Care & Socioecological Care: A repository for our research outputs
- **Sarah Hartley** (University of Exeter) & **Rory Murphy** (University of Exeter & ACCESS Fellow)  
The Social and Environmental Impacts of Data Centres

**Chair**

- **Birgitta Gatersleben** (ACCESS Co-Director, University of Surrey)



Sarah Parry



Lynn Cassells



Sarah Hartley



Rory Murphy

**10.15-10.45am**

Atrium, Xfi

**Tea & Coffee Break**

**10.45am-12.15pm**

Henderson Lecture  
Theatre, Xfi/hybrid



Jaya Gajparia



Zarina Ahmad



Nawang Choden



Lorraine Dongo



Andre Kpodonu



Viji Kuppan



Chamindra  
Weerawardhana



Beth Collier



Gurpreet Padda



Leon Sealey-  
Huggins

## Session 4 – Ecomodernism: Contradictions, Pluralities, Disruptive Possibilities and Decolonial Futures

An introduction to the Advisory Community to ACCESS on Intersectionality (ACAI), followed by a presentation and conversational panel.

### Introduction to ACAI

- **Jaya Gajparia** (University of Exeter, ACCESS Senior Research Fellow & Independent Scholar)
- **Zarina Ahmad** (University of Manchester & Co-Director of the Women's Environmental Network)
- **Nawang Choden** (Cambridge Conservation Initiative)
- **Lorraine Dongo** (ACU (The Association of Commonwealth Universities) & Race on the Agenda (ROTA))
- **Andre Kpodonu** (Co-Director of Seeding Reparations)
- **Viji Kuppan** (Independent Scholar)
- **Chamindra Weerawardhana** (Independent Scholar & Activist)

### Presentation – Foundations for Deep Community Building

- **Chamindra Weerawardhana** (Independent Scholar & Activist)

### Conversation Panel

- **Beth Collier** (Wild in the City)
- **Zarina Ahmad** (Women's Environment Network & University of Manchester)
- **Gurpreet Padda** (Marine Management Organisation)
- **Leon Sealey-Huggins** (Senior Campaigner Global Climate Justice & Just Transitions; Assistant Professor in Global Sustainable Development at University of Warwick)

### Chair

- **Andre Kpodonu** (Seeding Reparations CIC)

**12.15–1.15pm**

Atrium, Xfi

**Lunch**

Vegetarian/vegan buffet

**1.15–2.15pm**Henderson Lecture  
Theatre, Xfi**ACCESS Flex Fund Project Update 2**

Presentations from two ACCESS Flex Fund projects followed by Q&amp;A

**Presentations**

Davide Pettinato

Mohammed  
Fezzan Azam

- **Davide Pettinato** (University of Cambridge, Centre of Islamic Studies) & **Mohammed Fezzan Azam** (Cambridge Central Mosque)  
Experiences of nature and pro-environmental values, self-identities and personal norms among Muslims in the UK



Matilda Becker



Rosalind Chaston

- **Matilda Becker** & **Rosalind Chaston** (Oxford Net Zero, University of Oxford)  
Developing equitable climate standards: learnings from youth engagement and governance assessments

**Chair**

- **Birgitta Gatersleben** (ACCESS Co-Director, University of Surrey)

**2.15–2.30pm****Comfort Break****2.30–3pm**Henderson Lecture  
Theatre, Xfi/hybrid**Keynote Session: Yacob Mulugetta** (African Climate Policy Centre (ACPC), based at UCL)**Who Knows the Energy Transition? The State of Social Science in Africa and the Case for a Transdisciplinary Agenda**

(Followed by Q&amp;A)



Yacob Mulugetta

**Chair**

- **Patrick Devine-Wright** (ACCESS Director, University of Exeter)

**3-3.45pm**

Henderson Lecture  
Theatre, Xfi/hybrid



Julie MacArthur



Hsing-Sheng Tai



John Chung-En Liu



Saurabh Arora

**Session 5 – International Panel Discussion**

- **Julie MacArthur** (Royal Roads University, Canada)
- **Hsing-Sheng Tai** and **John Chung-En Liu** (National Taiwan University)
- **Saurabh Arora** (University of Sussex)

**Chair**

---

- **Patrick Devine-Wright** (ACCESS Director, University of Exeter)

**3.45-4pm**

Henderson Lecture  
Theatre, Xfi/hybrid

**Reflections & Closing Remarks**

- **Patrick Devine-Wright** (ACCESS Director)
- **Birgitta Gatersleben** (ACCESS Co-Director)



# ACCESS ASSEMBLY 2026

This is the final Assembly for the ACCESS project, and we are looking forward to bringing our ACCESS Network colleagues together in Exeter one last time.

## STAY IN TOUCH

Here's how you can stay in touch with ACCESS after the Assembly:

### ACCESS Newsletter

Join the ACCESS Newsletter for fortnightly emails featuring the latest environmental social science events, jobs, funding and news from across the ACCESS Network.

**Subscribe**

### LinkedIn

Follow ACCESS on LinkedIn. And do tag us in any posts you share about the event - we'd love to hear about your Assembly experience.

**Find us on LinkedIn**

## SAFE TRAVELS HOME!

We wish you a smooth journey home. If you need to book a taxi to the train station, here are some local firms:

Apple Taxis Exeter (01392 666666)

Frankies Taxis (01392 332211)

Set Fare Taxis (07508 730 301)

**This work was supported by the Economic and Social Research Council [Grant ES/W00805X/1] and UKRI Research England.**