



# Year 3 Progress Report

2024-2025

 **ACCESS**  
Advancing Capacity for Climate  
and Environment Social Science



# Table of contents

**1** Engagement & Highlights  
from the ACCESS Directors

**2** Project Summary

**3** Progress towards Impact

**4** Map, Assess & Learn Work  
Package 1

**5** Empower & Capacity  
Building  
Work Package 2

**6** Innovate  
Work Package 3

**7** Champion & Co-ordinate  
Work Package 4

**8** Guiding Principles

**9** The Big Picture:  
Challenges &  
Opportunities



# Engagement 2024/5

18

Stakeholders in  
our Policy &  
Practice Working  
Group



74

Applications to  
Flex Fund 2



1,000



43,000

Visitors to our website



Number of  
people  
attending  
webinars

102

Experts on the  
ACCESS  
expertise  
Database



840

Newsletter  
subscribers



£300K

Invested in  
Flex Fund 1  
projects



1,000+

Web views of  
the ACCESS  
Net Zero  
report

# Highlights 2024/5

"As the third year of our five-year programme comes to an end, we reflect on all that has been achieved so far, and focus increasingly on impact and legacy. Highlights of the past year included seeing the progress of our Flex Fund projects and speaking to policymakers and Chief Scientific Advisors about the highly anticipated Net Zero Task Force Report. The challenges we have faced in turning our Guiding Principles into practice have been really informative, and will bring useful lessons for other initiatives as we share our learnings widely."

**Professor Patrick Devine-Wright,  
ACCESS Director, University of Exeter**



"ACCESS is driving an emerging understanding of What Environmental Social Science is, why it is important and how we can use it, to tackle today's climate and environmental challenges. Over the next two years, we will focus on how we embed Environmental Social Science (ESS) more widely across different landscapes in government, civil society, business and the third sector. Guiding us will be the work we have done around driving impact. More about this can be found in the report."

**Professor Birgitta Gatersleben,  
ACCESS Co-Director,  
University of Surrey**





# Project Summary

Advancing Capacity for Climate and Environment Social Science (ACCESS) is a funded programme of work providing leadership on the social science contribution to tackling and solving a range of climate and environmental problems.

We recognise that technology alone is not enough.

And we are working to share our understanding of how people, our societies and our systems need to change and adapt to create a healthier environment and meet our net zero goals.



ACCESS has been funded for five years (2022-2027) by the Economic and Social Research Council (ESRC). Listen to Patrick Devine-Wright, ACCESS Director and Birgitta Gatersleben, ACCESS Co-Director talk about their aims and aspirations for ACCESS [here](#).

You can also read a journal article 'Placing people at the heart of climate action' which explains why social science is fundamental to helping solve the climate crisis and restore our environment [2022 ACCESS Public Library Of Science \(PLOS\) Climate Journal article](#). The journal was co-authored by many of the ACCESS Leadership Team.

if you would like to keep up to date with what we are doing at ACCESS - please visit the website [www.accessnetwork.uk](http://www.accessnetwork.uk) or better still subscribe to the fortnightly [newsletter](#)

# Project Summary: Who we are

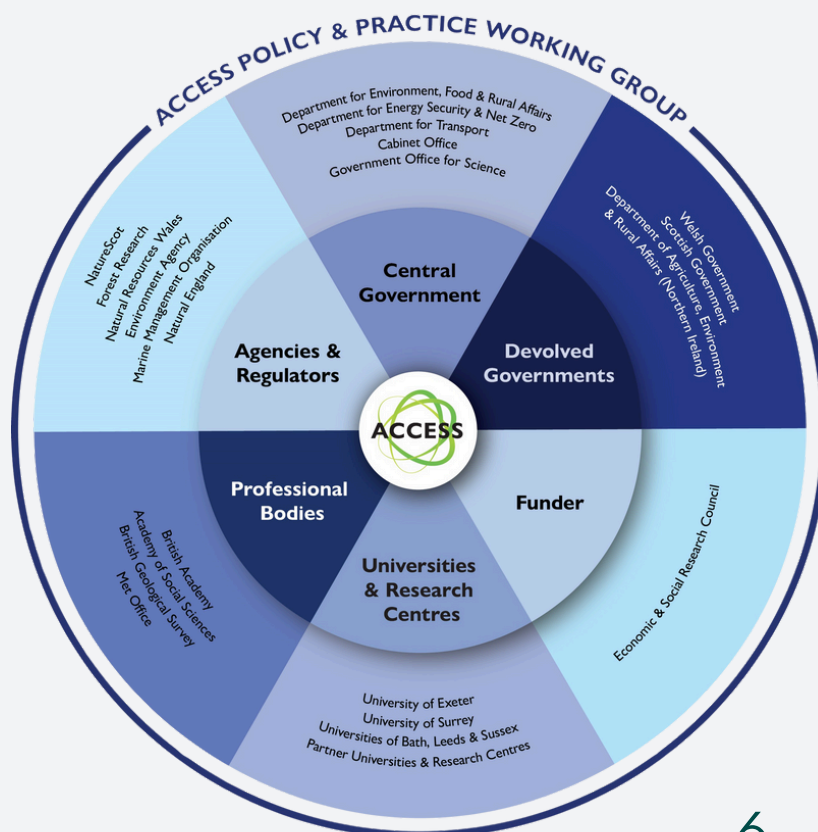
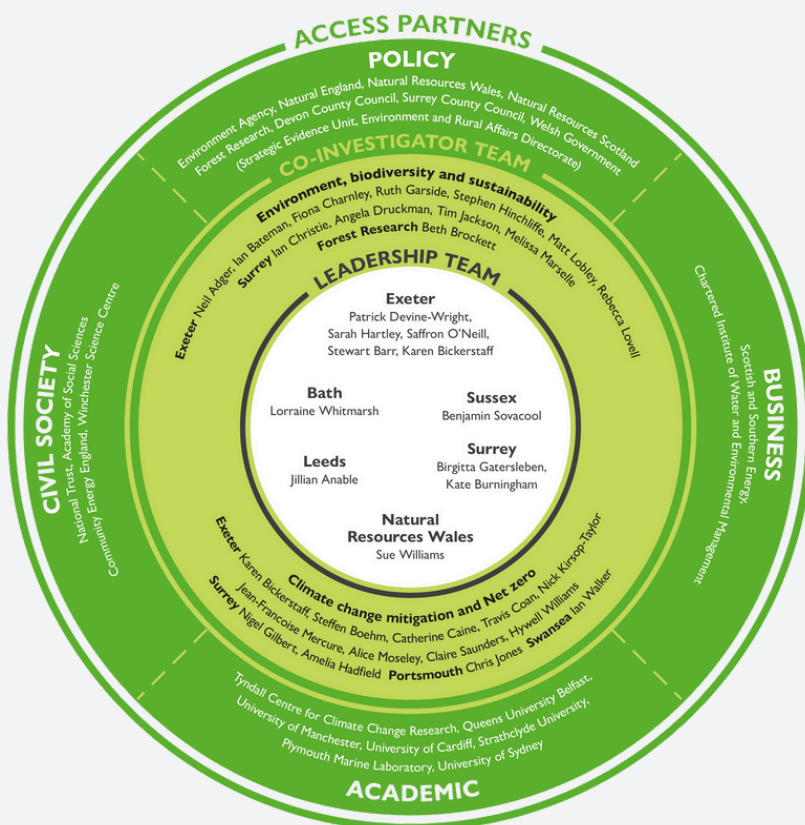
## World-leading social scientists from

University of Exeter, University of Surrey, University of Bath, University of Leeds, University of Sussex & Natural Environment Social Research Network (Natural Resources Wales, NatureScot, Natural England, Environment Agency and Forest Research)

Strathclyde University, Queens University Belfast, Cardiff University, Tyndall Centre for Climate Change Research, Manchester University, Plymouth Marine Laboratory & University of Sydney, Welsh Government, Scottish and Southern Energy, Chartered Institute of Water and Environmental Management, National Trust, Academy for Social Sciences, Community Energy England, Winchester Science Centre, Devon and Surrey County Councils

## Policy & Practice Working Group

In 2022 we set up the Policy and Practice Working Group to provide a regular forum in which social science knowledge on environmental problems could be shared between academics, officials from central and devolved governments, agencies and regulatory bodies, professional bodies and funding institutions. Over the past year, this group has met four times, including a meeting hosted by the British Academy in London. This forum has given confidence to social scientists in science-based organisations, deepened relationships between organisations and sectors, and encouraged the flow of social science knowledge across sector boundaries.





# Project Summary: How we work



**With our emphasis on knowledge co-production, we work collaboratively to make decisions by consensus and to share knowledge.**

## **Leadership Team**

Monthly meetings include all ACCESS Leaders, both academics and representatives of Nature Agencies. Decision-making is the group's main role.

## **Wider Partnership**

These meetings inform and involve but also share and celebrate each other's work, occurring three times per year.

## **Policy & Practice Working Group**

This group meets quarterly, mixing face-to-face and online formats. In Year 3, we instigated a rotating Chair to increase knowledge co-production.

**Project Advisory Board** meets annually to look at the project's progress, challenges and opportunities. Chaired by Prof. Susan Owens, the PAB has an international membership which provides useful insights into ESS beyond the UK. This year, we learned about interdisciplinary working from the Sydney Environment Institute.



**Annual Assembly** is our showpiece event, sharing new social science insights, building relationships and developing new networks.

## **Webinars, Seminars, Round Table discussions, Network events, Meetings, Collaborations, Symposiums, Conferences and Retreats**

This year we have organised and/or attended over 50 meetings and events with non-academics to advance the aims of the project.



# Project Summary: What we do



## Work packages

- 1. Map, Assess and Learn** from the past experiences of social scientists to catalyse change in policy culture, institutions (e.g., civil service), businesses and civil society.
- 2. Empower** environmental social scientists at different learning and career stages by providing tailored training and capacity building.
- 3. Innovate** by creating new ideas and testing new approaches that enable social scientists to play influential, leading roles in addressing environmental challenges.
- 4. Champion and coordinate** environmental social scientists across the UK and internationally by providing an accessible knowledge/data hub and innovative public engagement tracker.

## Guiding Principles

ACCESS consists of four areas of work which are underpinned by three Guiding Principles:

- **Knowledge Co-Production**
- **Equality, Diversity & Inclusion**
- **Environmental Sustainability**



# Progress towards Impact

## OUR IMPACT STATEMENTS

- 1** People have greater knowledge, skills, tools and confidence to do, include or champion ESS
- 2** The diverse value of ESS in addressing challenges is understood and recognised more widely
- 3** More people working in and around ESS know and trust each other
- 4** ESS is integrated more frequently at the start of projects
- 5** Our Guiding Principles are adopted by more projects
- 6** Environmental challenges are addressed more frequently through interdisciplinary working that includes social science

**In the rest of this report we use the colours for each of these statements to describe the impact of our work.**

The impact statements have been created to align with our revised Theory of Change (to be published later in 2025). Quarterly reports to our funders, the Economic and Social Research Council, are measured against these impact statements.

## OUR STAKEHOLDERS



**Universities and Research centres**



**Govt, third sector and commercial**



**Professional bodies & learned societies**



**Funding bodies**



**ACCESS**

This ACCESS Progress Report 2024-5 tests the activities and progress against ACCESS impact statements. Providing more coherence in assessing progress against the outcomes we want to deliver.

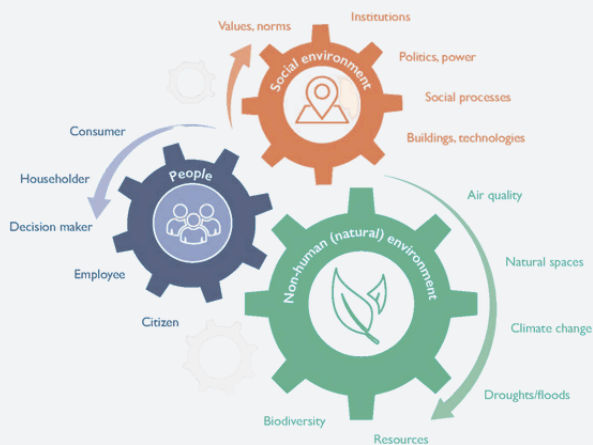
"We are building on the strong social science knowledge base to develop a more visible, responsive and interdisciplinary-oriented social science that engages with people and is valued in its diversity by decision-makers from government, industry, civil society and law." ([Devine Wright et al., 2022](#))

# Map, Assess and Learn Work Package 1

## OUR WORK

This year we have been analysing the interview data collected in 2023 with existing literature to produce a definition of Environmental Social Science and a What, who, why and how guide that includes:

Reports, Toolkits, Case studies, Slide deck & Webinar



Part of this work also included producing guidance on how to do Knowledge Exchange mapping with further reports on working in inter-and transdisciplinary ways.

## OUR ENGAGEMENT & IMPACT



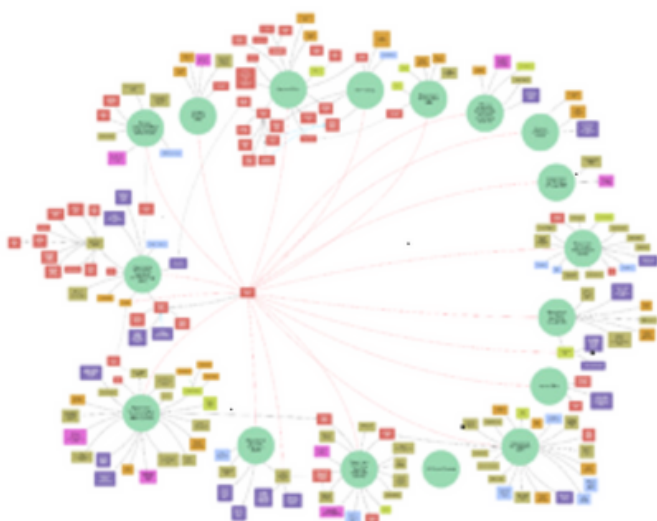
Co-produced definition of ESS and how it can be used to address environmental challenges. These are already being adopted within and outside the ACCESS team.



Work has begun on using ESS NEMO as a framework for analysis of inclusion in multi-disciplinary and multi-sectoral projects such as GO-Science Foresight Reports and House of Commons Environmental Audit Committee projects.



The creation and presentation of a toolkit for social sciences in Policy and Practice by Flex Fund 1 awardee Dr Ruth Lamont (Natural England) is helping to ensure ESS can be integrated more frequently throughout projects.



"The ESS definition was used by several social scientists at Natural England, NatureScot, & the Met Office. Forest Research used the document to champion ESS with the Curlew Action Group "

ACCESS Leadership Team minutes



# Map, Assess and Learn

## CHALLENGES & OPPORTUNITIES

### Environmental Social Science Reports:

We would have liked larger sample sizes from the survey we sent out about ESS. The quality of the information gathered in interviews was however sufficient to ensure a robust review.

### Sharing our knowledge:

Dr George Warren, the Knowledge Exchange Fellow who worked in this area has completed his contract so we now need to think about the next steps to increase awareness of ESS and its benefits.

laboratory experiment  
citizen jury fieldwork agent-based  
participation case studies experiment  
field experiment mapping  
historical analyses visioning  
econometrics observation  
Social science methods & tools  
interview systems mapping  
modelling neuroimaging  
statistics citizen science  
surveys focus group forecasting  
think aloud horizon scanning  
ethnography  
walk through game theory

## OUR ENGAGEMENT & IMPACT



Dr Harry Marshall gave an online presentation to DEFRA about ESS NEMO.



Dr George Warren attended the Champion Air 2024 conference to talk about ESS NEMO

Professor Patrick Devine-Wright used the ESS slide deck in a presentation on ACCESS to the Institute of Environmental Sciences.

## NEXT STEPS

- Writing up an ESS Journal article
- Presenting findings at Environment/Climate Conferences
- Webinars
- Working with partners to embed the work in practice
- Working with Education Co-Investigators



# Empowerment & Capacity Building: Work Package 2

## TRAINING

### Masterclass

**Systems Mapping for Environmental Domains (SMED) workshop** which was led by Dr Pete Barbrook-Johnson and Dr Alexandra Penn.

### Webinars

- **How we can de-carbonise travel in higher education,**  
Professor Stewart Barr
- **How to use the Environmental Social Science kNowledge Exchange Map of Opportunities (ESS NEMO) to improve research impact, collaboration & understanding,** Dr George Warren
- **Growing the social sciences within environmental organisations,**  
Dr Ruth Lamont
- **How can we decarbonise society in ways that are place-sensitive and fair?** Professor Patrick Devine-Wright
- **Behaviour change and the climate emergency: policy choices to drive social action,**  
Professor Lorraine Whitmarsh
- **Why do we need Environmental Social Sciences?**  
Professor Birgitta Gatersleben

### Mentor programme

Our own 1-1 mentoring scheme has been operating since 2023. So far, we have paired 15 Early Career Researchers with more experienced colleagues. In our **mentoring report** we share reflections on designing and running this scheme.

## OUR ENGAGEMENT & IMPACT



The SMED workshop ran with over 20 people - social scientists across academia, commercial and government. There have been requests to run more of these.



The webinars were well received with over 300 people joining them. Audiences were mixed across all of our stakeholders and included Social Scientists (early and mid career) and non-Social Scientists. Most were UK based but there were some from other Northern European countries.



The Mentor programme includes ACCESS Fellows and the Leadership team. It focuses on professional development.



“Had an excellent day at the ACCESS Advancing Capacity for Climate Environment Social Science / CECAN Ltd systems mapping for environmental domains workshop, learning all about how to move from paralysing complexity, to actionable complexity.”

Douglas Booker, Lecturer in Indoor Air at the University of Leeds



# Empowerment & Capacity Building

## LEADERSHIP COLLEGE

We ran a very successful 3-day immersive Leadership College retreat on 24-26 April 2024. Sessions included the barriers experienced by Black and Minority Ethnic researchers working in ESS (Beth Collier, Wild in the City) and how a reflection of how a woman working in a male-led industry/research environment, addresses challenges and opportunities of and for leadership (Antonella Battaglini, Renewables Grid Initiative). Other highlights included a 1-1 interactive session at the Coproduction Oracle Booth and a presentation from Studio Silverback/Open Planet

[Leadership College 2024 Blog by Richard Bridge](#)



## PLACEMENTS

This year we published a [webpage](#) signposting placement opportunities and sharing people's experience of placement schemes. ACCESS Knowledge Exchange Fellow Dr Steve Guilbert took up a 6 month placement with Defra.

## OUR ENGAGEMENT & IMPACT



Our cohort of twenty Leadership College Fellows represent all of our different stakeholder groups.

It is a useful case study on how to create a supportive and diverse leadership network for ECRs via annual retreats. Feedback indicates that our approach – retreat location, content and format is received positively. Social capital and post-retreat evaluation surveys will build on informal feedback from the Fellows to provide a complete picture of impacts to date.

"I really valued the opportunity to see what the world looks like to each of us through each of our different lenses and how we can come together to share knowledge. But, most of all for me, feeling free and comfortable to share our concerns, thoughts and emotions surrounding the challenges and opportunities we face, in a safe and supportive environment. I really feel like we are building a compassionate and resilient community of environmental social scientists bridging sectors and disciplines"

Leadership College Fellow

# Empowerment & Capacity Building

## CHALLENGES & OPPORTUNITIES

We have received feedback from partners and others that they would value a repeat of the Systems Mapping workshop.

We are looking at how we might co-create material for a Summer School in September 2025 with the aim to increase social science evidence in environmental policy making.

We have a £15K fund available for Leadership College Fellows to apply for to support further collaboration between the Fellows from different backgrounds and organisations to progress ACCESS aims.

"It's been very valuable, to have someone who is very kind and helpful across a range of areas" and "I think it was one of the most valuable experiences I have ever had. Having a mentor who was so generous, open, and experienced really helped me to grow strategically and in terms of leadership, which was exactly what I was hoping to achieve."

ACCESS Mentee

## NEXT STEPS

- More webinars
- Summer School 2025
- Leadership College 2025
- Continue to highlight placements on the website and newsletter
- Explore opportunities to run a further mapping workshop





# Innovation & Agility: Work Package 3

## FLEX FUND ROUND 1

Nine Round-1 Flex Fund projects finished in September 2024:

- Dr Jaya Gajparia, Dismantling the Legacy: Decolonising the conservation and environmental sectors using a social science framework
- Dr Patrick Elf, Regenerative post-growth fashion – Challenging the unsustainability of the UK fashion and textile sector from the perspective of key suppliers in Bangladesh and India
- Dr Sarah Higginson and Uttara Narayan, REPAIR: Research on Energy through Participatory Insights from Community Representatives
- Dr Ruth Lamont, Developing across-organisation social science resources for non-social scientists within environmental agencies
- Dr Elizabeth Lawson, “Taps Aff!” Voicing experiences of water scarcity in rural Scotland
- Dr Davide Pettinato, Green(ing) British Muslims: Towards an interdisciplinary, intersectoral, co-produced framework
- Dr Rosamund Portus, Buzzing about Bees: Exploring Active Storytelling for transforming Children’s Environmental Agency
- Dr Catherine Price, Including the More-Than-Human World in Responsible Research and Innovation (RRI): Developing a conceptual framework
- Dr Bethan Stagg, Can a novel knowledge co-production approach advance community organisations’ ability to harness the social sciences in urban bio-diversity renewal?

## OUR ENGAGEMENT & IMPACT



Flex Fund projects have engaged both local, national and international audiences (e.g. schools, religious leaders, local authority officers, businesses, environmental conservation leaders).



The impact of their work is still being evaluated. We are conducting research on their experiences of applying the ACCESS Guiding Principles and have invited all project leads to 1:1 follow up meetings and to the 2025 ACCESS Assembly.



Check out their individual webpages for more information about each project outcomes.

“My involvement in ACCESS has led to multiple positive opportunities... leading on a project as an early career researcher: it has taught me a lot about how to effectively manage teams of people through delegation and skills development”

Flex Fund awardee

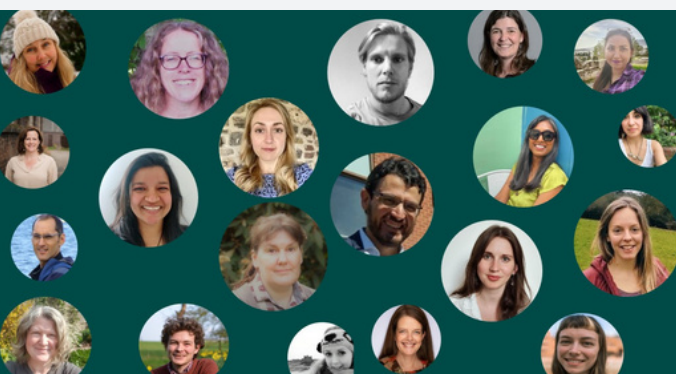
# Innovate & Agility: Work Package 3

## FLEX FUND ROUND 2

This year, we delivered Round 2 of our Flex Fund, with a total value of £726,000.

74 proposals were submitted, 39 experts helped with peer view and 3 awards were made:

- [Dr Sarah Parry](#): Building Sustainability on a Foundation of Care. A Pilot Study in the Highlands of Scotland. [Read more](#)
- [Dr Davide Pettinato](#): British Muslims and pro-environmental values, self-identities and personal norms: Evaluating a faith-literate, multi-component educational intervention co-produced with the first green mosque in the UK. [Read more](#)
- [Kaya Axelsson](#): Unlocking the Power of Youth to develop equity in net-zero governance. [Read more](#)



## CHALLENGES & OPPORTUNITIES

We are just about to publish a report which evaluates the Flex Fund Round 2 call.

We used methods such as surveys to capture the experiences of those managing, applying and reviewing applications (see comment below).

The report will show some of the challenges we faced in delivering Round 2 (e.g. blinding applications, and providing tailored feedback). The findings will be of use to other initiatives delivering Flexible Funds or applying Guiding Principles.

"I start a new job as a social scientist with Forest Research next month... I will use the expertise derived from the project in the research projects I will contribute to in Forest Research, for example social equity and urban tree cover, public perceptions of urban trees, values of street trees in highly urbanised areas. "

Flex Fund 2 applicant



# Innovate and Agility

## NET ZERO TASK FORCE

In September 2024 the Net Zero Task Force published the report **'Making a Net Zero Society: Follow the Science'**. In the report they suggested key steps and recommendations to support the delivery of the Net Zero 2030 policy target. The report makes clear the need to take a fresh approach to understand, plan and deliver the social and cultural change that will be needed to reach Net Zero.

The task force comprised 10 leading academics from different social science disciplines who together analysed the UK Net Zero Research and Innovation Framework, Delivery Plan and Net Zero Society: Scenarios and Pathways Report. They also presented case studies of past and ongoing societal change and transition, that offer lessons for Net Zero policy.

[Net Zero report webpage](#)



## OUR ENGAGEMENT & IMPACT



The report went out to over a hundred people, including civil servants and local officers, Parliamentary organisations, MPs, local government organisations, policy advisors and 'knowledge holders' (Learned Societies, Networks, Centres & Projects).



We also had coverage from the Academy of Social Science, Bennett Institute for Innovation and Policy Acceleration and The Institution of Environmental Sciences. An article on the Task Force will come out in The Conversation in Spring 2025.



Task Force members have shared findings in webinars and roundtables, as well as social media platforms.

“Following the science on climate change has long been crucial, but on its own doesn't make change happen. The social sciences have an enormous amount to contribute to finding effective and practical routes to net zero across society”

Professor Gordon Walker, Co-author at the Lancaster Environment Centre, Lancaster University

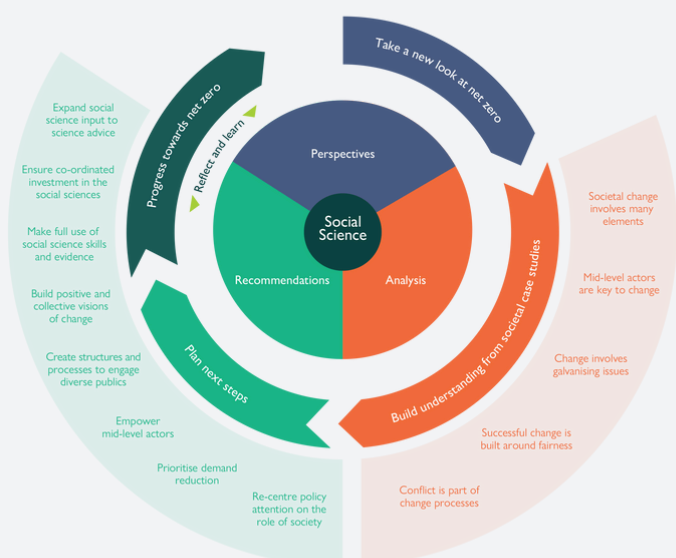
# Innovate and Agility

## CHALLENGES & OPPORTUNITIES

**Task Force 1:** Involving interdisciplinary experts on the Task Force team was hugely beneficial. Yet face-to-face meetings were difficult to timetable; and creating visuals that accessibly summarised key points was a challenge.

**Flex Fund:** Our evaluation of the Flex Fund highlighted the need for more capacity to turn Guiding Principles into practice. Resource and time constraints impacted on the quality of feedback we gave to unsuccessful applicants, which was poorly received, highlighting the need for capacity to deliver more inclusive and detailed feedback processes.

Other helpful feedback was also given and will soon be available to read on our [Flex Fund web page](#).



Key steps to Make a Net Zero Society

## TASK FORCE 2: NATURE RECOVERY

ACCESS's second Task Force is looking at how the social sciences can be more effectively deployed to reconfigure land use and land management in order to deliver nature recovery for more sustainable futures. The group will start by selecting a number of case studies of relevant policy developments. These will then be reviewed to establish the extent to which they were informed by social science and whether gaps and unrealised opportunities for more social-science inputs can be identified. [Task Force web page](#).

## NEXT STEPS

- The Nature Recovery Task Force is due to finish later this year. Discover our key findings in our next progress report
- Launch of Task Force 3
- Exploring possible collaborations for Task Force 4
- Flex Fund 1 awardee webinars
- Flex Fund 2 Assembly session
- Flex Fund 2 Evaluation report
- Interviews with Flex Fund 1 project leads about how they used ACCESS Guiding Principles



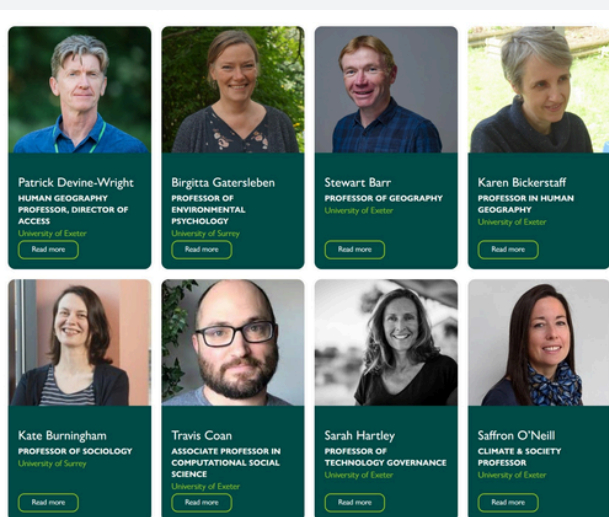


# Champion & Co-ordinate

## NEWSLETTER, EXPERT DATABASE

### ACCESS Newsletter

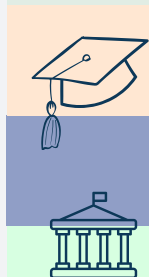
This fortnightly subscription includes news, events, jobs, funding, opportunities and the latest papers and articles. Its main audience are environmental social scientists both inside and outside of academia. It's also our main channel to inform and promote ACCESS's work. We currently have 840 subscribers who are mainly based in England, Scotland, Wales and Northern Ireland.



### ACCESS Expert Database

We have developed a publicly available, searchable database of social scientists and experts working in the fields of climate and the environment. Most of the 103 experts on the database have a social-science background and use a mix of different methods and approaches to help us better understand people and society's roles in addressing climate and environmental challenges

## OUR ENGAGEMENT & IMPACT



### ACCESS Newsletter

35% of our subscribers are from Policy, Civil Society and Business sectors. The Newsletter open rate is an impressive 50% and our click rate is just over 20%. On average we have 6 new sign ups every week.



### ACCESS Expert Database

We have had very positive feedback from officials at Go-Science and other government agencies about how useful the database is to identify and connect experts across different sectors.

## NEXT STEPS

- Look to see how we can involve other social science investments in the PPWG
- Make our Expert Database more accessible
- Continue to increase subscribers to the newsletter and test it's effectiveness
- Make the website more navigable and update resources like the expertise database
- Scale up engagements with devolved governments and plan a larger Annual Assembly in 2026.
- Highlight case studies that demonstrate the value of environmental social science to solving climate and environmental challenges.

# Guiding Principles

## GUIDING PRINCIPLES

The Guiding Principles team have updated the travel section of the Guiding Principles acknowledging the challenges around air travel.

[Blog and associated Travel Policy.](#)

Work around co-production informed a transdisciplinary panel discussion at the International Association of People-environment Studies conference in Barcelona.

The ACCESS network have been promoting the use of the Guiding Principles to inform everything from event catering and travel to funding bids.

The University of Exeter Enabling Rail Travel Task and Finish Group has adopted some of the Guiding Principles into their work.



## OUR ENGAGEMENT & IMPACT



The Guiding Principles have been written into sustainability governance and EDI sections of the ESRC funded Centre for Net Positive Health and Climate Solutions.



They are informing the organisation of a major international Environmental Psychology conference to be held in 2026 (the International Association of People-environment Studies Conference 2026).



ACCESS delivered a workshop on the Guiding Principles at a UKRI Sustainability Network event.

“The info shared by the ACCESS team was super useful and it was also really good to understand how different areas of UKRI can collaborate more closely. I especially liked the very practical focused afternoon session linked to UKRI priorities around Environmental sustainability.”

ESRC funder



# Guiding Principles

## CHALLENGES & OPPORTUNITIES

**ACCESS Assembly:** The project has ongoing concerns about ethnic diversity within the leadership team and at events, prompting efforts to seek independent advice and improve diversity practices.

**Travel:** The issue of using air travel for ACCESS-related events and activities posed an initial problem in terms of how to respond and support those considering air travel. This has been turned into a positive, through developing our Travel Guidance document.

**Data Collection:** In the past year, we received Ethical Approval and have begun to collect data on how the Guiding Principles have been applied in practice.



## OUR ENGAGEMENT & IMPACT

I hope this email finds you well. I wanted to express my appreciation for your recent webinar on "How Can We De-carbonise Travel in the Workplace?". It was incredibly insightful, and I found your perspectives on sustainable travel and reducing carbon footprints in the workplace very inspiring"

Webinar attendee

## NEXT STEPS

- We will continue to collect data on the application of the Guiding Principles. Following analysis of this data, a revised Guiding Principles 'toolkit' will be developed and shared, as well as a journal paper.

# The Big Picture: Challenges & Opportunities

## CHALLENGES

**Wider Partnership:** While we have succeeded in expanding our networks in Year 3, maintaining engagement with individuals and organisations not directly involved in our work programme has been a challenge. In response, we have engaged directly with Co-Investigators and partners, and are using future plans (e.g. potential Task Forces) as a way to scope more active involvement.

**Capacity Constraints:** Managing an expanding network with limited time and resources is a challenge. In year 3, we have focused on the value of strategic partnerships, for example collaborations with the British Academy and Go-Science.

**Staffing Issues:** Loss of key staff members and instances of sick leave have disrupted project momentum. In response, we have used new hires to introduce new thinking and refresh our approach (e.g. our new Communications Manager, Suzy Darke).

## FUTURE OPPORTUNITIES

As we start thinking beyond the project, we wonder if a future version of ACCESS could act as an engagement and empowerment 'hub' for environmental social science.

With sufficient resources the 'hub' could create 'spokes' that reach out to, network with and impact specific sectors, and which overall seeks to integrate those into a coherent whole or community of practice.

In terms of impact, ACCESS has primarily focused on the UK as the relevant geographical area for our work to date. As a consequence, some non-UK-based environmental social scientists have not been able to take up opportunities from our work programme.

One option for ESRC is to imagine a future version of ACCESS with more of an international remit, both to include researchers from UK Universities and Research Organisations with a primary focus on international research, and to include researchers from non-UK Universities and Research Organisations (e.g. based in the Global South), as collaborators in our work.





# Acknowledgements

With thanks to the ACCESS  
Leadership and Operations  
teams

## Writers of the report:

**Patrick Devine-Wright**

ACCESS Director

**Professor Birgitta Gatersleben**

ACCESS Co-Director

**Sarah Baker**

ACCESS Project Manager

**Funder: Economic & Social  
Research Council**

**Grant ref ES/ W00805X/**



University  
of Exeter



UNIVERSITY OF  
SURREY



Economic  
and Social  
Research Council

**March 2025**

[www.accessnetwork.uk](http://www.accessnetwork.uk)

[ACCESS\\_Admin@exeter.ac.uk](mailto:ACCESS_Admin@exeter.ac.uk)



Find us on LinkedIn